



SHANDONG FARMCO BEARING CO.,LTD



Sales Managers (Foreign Markets) :86-21-34780723

24 HOURS Service:0086-13816936745



www.farmcobearing.com

info@farmcobearing.com

mandy@farmcobearing.com

A LEADING MANUFACTURER OF AGRICULTURAL MACHINERY BEARING

ABOUT US



Founded in 2010, FARMCO Bearing Co., Ltd., is a high-end equipment manufacturing enterprise, which has become one of the Professional manufacturers among the domestic non-state-owned bearing companies in terms of production scale and sales volume. Located in LIAOCHENG City, “High speed, low noise, long service life, high load capacity and high flexibility” have become five widely recognized major advantages of FARMCO bearing products.

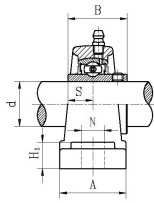
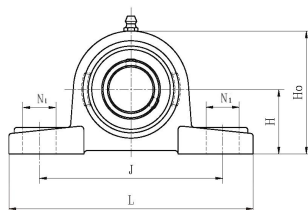
FARMCO’S MISSION

Bearing is the heart of machine, as well as the key for energy saving. Bearing world is vast and extensive. FARMCO’s journey has just begun. There is a long way to fulfill the mission of carrying limitless driving force and to achieve the ultimate objective of saving energy for the world. We are duty-bond.

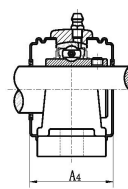
FARMCO’S VISION

Become a trusted supplier for the global Agricultural machinery bearing.





UCP2
带顶丝



S-UCP200E1
SM-UCP200E1
带端盖

带座轴承 代号	轴径 d		外形尺寸(mm)											螺栓 规格	轴承 代号	座代号	重量 (kg)	可选用	
	(in.)	(mm)	H	L	J	A	N	N ₁	H ₁	H ₀	S	B	A ₄					N	N ₁
UCP201S 201-8S 202S 202-10S 203S 203-11S	1/2 5/8 11/16	12 15 17	30.2	125	96	32	12	16	13	57	11.5	27.4	--	M10	UC201S 201-8S 202S 202-10S 203S 203-11S	P203S	0.53 0.52 0.51	--	--
UCP201 201-8 202-10 203 203-11	1/2 5/8 11/16	12 15 17	30.2	127	96	37	13	19	14	60.7	12.7	31	--	M10	UC201 201-8 202S 202-10 203 203-11	P203	0.72 0.70 0.69	--	--
UCP204-12 204	3/4	20	33.3	127	96	37	13	16	14	65	12.7	31	45	M10	UC204-12 204	P204	0.69	13	19
UCP205-14 205-15 205 205-16	7/8 15/16 1	25	36.5	140	105	38	13	19	15	71	14.3	34	48	M10	UC205-14 205-15 205 205-16	P205	0.82	--	--
UCP206-18 206 206-19 206-20	1-1/8 1-3/16 1-1/4	30	42.9	160	121	44	14	19	16	83	15.9	38.1	52	M12	UC206-18 206 206-19 206-20	P206	1.22	17	21
UCP207-20 207-21 207-22 207 207-23	1-1/4 1-5/16 1-3/8 1-7/16	35	47.6	167	126	48	15	19	17	93	17.5	42.9	59	M12	UC207-20 207-21 207-22 207 207-23	P207	1.61	17	21
UCP208-24 208-25 208	1-1/2 1-9/16	40	49.2	180	136	52	15	21	18	100	19	49.2	68	M12	UC208-24 208-25 208	P208	1.99	17	23
UCP209-26 209-27 209-28 209	1-5/8 1-11/16 1-3/4	45	54	190	146	54	15	21	20	108	19	49.2	70	M12	UC209-26 209-27 209-28 209	P209	2.36	17	23
UCP210-30 210-31 210	1-7/8 1-15/16	50	57.2	204	159	57	19	22	21	114	19	51.6	75	M16	UC210-30 210-31 210	P210	2.73	--	--
UCP211-32 211-34 211 211-35	2 2-1/8 2-3/16	55	63.5	217	172	60	19	22	22	126	22.2	55.6	78	M16	UC211-32 211-34 211 211-35	P211	3.42	--	--
UCP212-36 212 212-38 212-39	2-1/4 2-3/8 2-7/16	60	69.9	238	186	66	19	25	24	138	25.4	65.1	91	M16	UC212-36 212 212-38 212-39	P212	4.66	--	--
UCP213-40 213	2-1/2	65	76.2	262	203	70	23	29	26	151	25.4	65.1	98	M20	UC213-40 213	P213	5.95	25	29
UCP214-44 214	2-3/4	70	79.4	266	210	72	23	29	27	157	30.2	74.6	--	M20	UC214-44 214	P214	6.56 7.43	25	29
UCP215 215-48	3	75	82.6	274	217	74	25	29	28	164	33.3	77.8	--	M20	UC215 215-48	P215	7.43	--	--
UCP216	80	88.9	292	232	78	25	30	30	175	33.3	82.6	--	M20	UC216	P216	8.83	--	--	
UCP217-52 217	3-1/4	85	95.2	310	247	83	25	30	32	187	34.1	85.7	--	M20	UC217-52 217	P217	10.8	--	--
UCP218-56 218	3-1/2	90	101.6	326	262	88	27	30	33	200	39.7	96	--	M22	UC218-56 218	P218	12.8	27	33
UCP220 220-64	4	100	115	380	305	95	30	36	40	225	42	108	--	M24	UC220 220-64	P220	26.3	--	--

注: 油嘴可位于座正面右边45°。



UCP2 Setscrew typ***



UCP200M Setscrew t***



NAP2 Setscrew typ***



NAP200M Setscrew t***



UKP2 Setscrew typ***



UKP200M Setscrew t***



SBP2G Setscrew typ***



SAP2G Setscrew typ***



UCPK2 Setscrew typ***



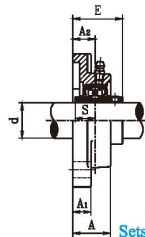
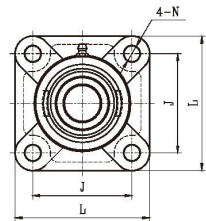
NAPK2 Setscrew typ***



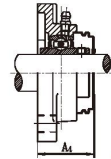
UCPX Setscrew type



UCP3 Setscrew typ***



UCF2
Setscrew type



S-UCF200E1
SM-UCF200E1
With end cover

Unit No.	Shaft Dia.		Dimensions(mm).										Bolt Size	Bearing No.	Housing No.	Mass (kg)	Available
	d (in.)	d (mm)	L	J	A ₂	A ₁	A	E	(N.)	S	A ₄						
UCF201S 201-8S 202S 202-10S 203S 203-11S	1/2 5/8 11/16	12 15 17	76	54	15	11	24.5	30.9	11.5	11.5	--	M10	UC201S 201-8S 202S 202-10S 203S 203-11S	F203	0.39 0.38 0.37	--	
UCF201 201-8 202 202-10 203 203-11 204-12 204	1/2 5/8 11/16 3/4	12 15 17 20	86	64	15	11	25.5	33.3	11.5	12.7	37.5	M10	UC201 201-8 202 202-10 203 203-11 204-12 204	F204	0.64 0.62 0.61 0.59	12	
UCF205-14 205-15 205 205-16	7/8 15/16 1	25	95	70	16	13	27	35.7	11.5	14.3	40	M10	UC205-14 205-15 205 205-16	F205	0.78	12	
UCF206-18 206 206-19 206-20	1-1/8 1-3/16 1-1/4	30	108	83	18	13	31	40.2	11.5	15.9	44	M10	UC206-18 206 206-19 206-20	F206	1.12	12	
UCF207-20 207-21 207-22 207 207-23	1-1/4 1-5/16 1-3/8 1-7/16	35	117	92	19	15	34	44.4	14	17.5	48.5	M12	UC207-20 207-21 207-22 207 207-23	F207	1.54	--	
UCF208-24 208-25 208	1-1/2 1-9/16	40	130	102	21	15	36	51.2	14	19	55	M12	UC208-24 208-25 208	F208	1.81	16	
UCF209-28 209-27 209-28 209	1-5/8 1-11/16 1-3/4	45	137	105	22	16	38	52.2	16	19	57	M14	UC209-26 209-27 209-28 209	F209	2.02	--	
UCF210-30 210-31 210	1-7/8 1-15/16	50	143	111	22	16	40	54.6	18	19	60	M16	UC210-30 210-31 210	F210	2.32	16	
UCF211-32 211-34 211 211-35	2 2-1/8 2-1/4 2-3/16	55	162	130	25	18	43	58.4	18	22.2	64	M16	UC211-32 211-34 211 211-35	F211	3.07	19	
UCF212-36 212 212-38 212-39	2-1/4 2-3/8 2-7/16	60	175	143	29	18	48	68.7	18	25.4	74.5	M16	UC212-36 212 212-38 212-39	F212	4.34	19	
UCF213-40 213	2-1/2	65	187	149	30	22	50	69.7	18	25.4	79	M16	UC213-40 213	F213	4.91	19	
UCF214-44 214	2-3/4	70	193	152	31	22	54	75.4	18	30.2	--	M16	UC214-44 214	F214	6.27	19	
UCF215-47 215 215-48	2-15/16 3	75	200	159	34	22	56	78.5	18	33.3	--	M16	UC215-47 215 215-48	F215	6.33	19	
UCF216		80	208	165	34	22	57	83.3	22	33.3	--	M20	UC216	F216	7.00	23	
UCF217-52 217	3-1/4	85	220	175	36	24	63	87.6	23	34.1	--	M20	UC217-52 217	F217	8.69	--	
UCF218-56 218	3-1/2	90	235	187	40	25	68	96.3	23	39.7	--	M20	UC218-56 218	F218	11.1	--	
UCF220 220-64	4	100	265	210	44	25	70	110	27	42	--	M22	UC220 220-64	F220	14.8	--	



UCF2



NAF2



UKF2+H



SAF2G



SBF2G



UCFX



UCFU2



NAFU2



SAFU2G



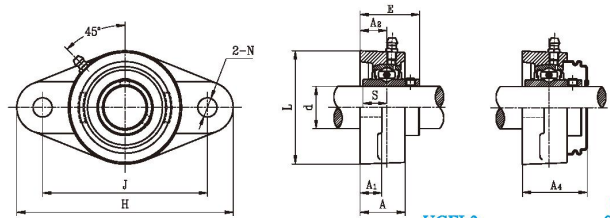
UCF3



NAF3



UKF3+H



UCFL2
Setscrew type

S-UCFL200E1
SM-UCFL200E1
With end cover

Unit No.	Shaft Dia.		Dimensions(mm).										Bolt Size	Bearing No.	Housing No.	Mass (kg)	Available
	d		H	J	L	A2	A1	A	E	N	S	A4					
	(in.)	(mm)															
UCFL201S 201-8S 202S 202-10S 203S 203-11S	1/2 5/8 11/16	12 15 17	99	76.5	57	15	11	24.5	30.9	11.5	11.5	—	M10	UC201S 201-8S 202S 202-10S 203S 203-11S	FL203	0.37 0.36 0.35	—
UCFL201 201-8 202 202-10 203 203-11 204-12 204	1/2 5/8 11/16 3/4	12 15 17 20	113	90	60	15	11	25.5	33.3	11.5	12.7	37.5	M10	UC201 201-8 202 202-10 203 203-11 204-12 204	FL204	0.47 0.45 0.44 0.42	12
UCFL205-14 205-15 205-16	7/8 15/16 1	25	130	99	68	16	13	27	35.7	11.5	14.3	40	M10	UC205-14 205-15 205 205-16	FL205	0.61	16
UCFL206-18 206 206-19 206-20	1-1/8 1-3/16 1-1/4	30	148	117	80	18	13	31	40.2	11.5	15.9	44	M10	UC206-18 206 206-19 206-20	FL206	0.90	16
UCFL207-20 207-21 207-22 207 207-23	1-1/4 1-5/16 1-3/8 1-7/16	35	161	130	90	19	14	34	44.4	14	17.5	48.5	M12	UC207-20 207-21 207-22 207 207-23	FL207	1.21	16
UCFL208-24 208-25 208	1-1/2 1-9/16	40	175	144	100	21	14	36	51.2	14	19	55	M12	UC208-24 208-25 208	FL208	1.55	16
UCFL209-26 209-27 209-28 209	1-5/8 1-11/16 1-3/4	45	188	148	108	22	16	38	52.2	18	19	57	M16	UC209-26 209-27 209-28 209	FL209	1.87	19
UCFL210-30 210-31 210 210-32	1-7/8 1-15/16 2	50	197	157	115	22	16	40	54.6	18	19	60	M16	UC210-30 210-31 210 210-32	FL210	2.16	19
UCFL211-32 211-34 211 211-35	2 2-1/8 2-3/16	55	224	184	130	25	18	43	58.4	18	22.2	64	M16	UC211-32 211-34 211 211-35	FL211	2.89	19
UCFL212-36 212 212-38 212-39	2-1/4 2-3/8 2-7/16	60	250	202	140	29	18	48	68.7	18	25.4	74.5	M16	UC212-36 212 212-38 212-39	FL212	3.75	23
UCFL213-40 213	2-1/2	65	258	210	155	30	20	50	69.7	23	25.4	79	M20	UC213-40 213	FL213	4.68	—
UCFL214-44 214	2-3/4	70	265	216	160	31	20	54	75.4	23	30.2	—	M20	UC214-44 214	FL214	5.26	—
UCFL215-47 215 215-48	2-15/16 3	75	275	225	164	34	22	55	78.5	23	33.3	—	M20	UC215-47 215 215-48	FL215	5.38	—
UCFL216		80	290	233	180	34	22	58	83.3	25	33.3	—	M22	UC216	FL216	6.76	—
UCFL217-52 217	3-1/4	85	305	248	190	36	22	63	87.6	25	34.1	—	M22	UC217-52 217	FL217	8.48	—
UCFL218-56 218	3-1/2	90	320	265	205	40	23	68	96.3	25	39.7	—	M22	UC218-56 218	FL218	10.3	—



UCFL2 Setscrew typ...



NAFL2 Setscrew



UKFL2 Setscrew



UCFLX Setscrew



SAFL2G Setscrew



SBFL2G Setscrew



UCFLU2 Setscrew



NAFLU2 Setscrew



SAFLU2G Setscrew



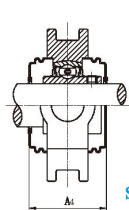
UCFL3 Setscrew

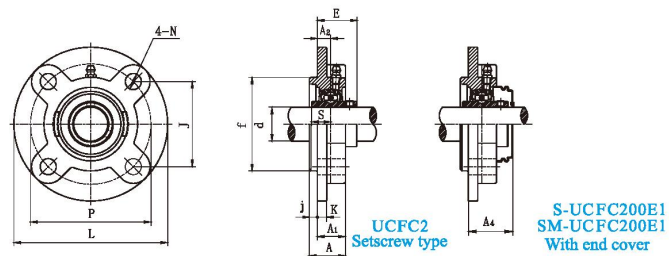


NAFL3 Setscrew



UKFL3 Setscrew

[illegible]



Unit No.	Shaft Dia.		Dimensions(mm).														Bolt Size	Bearing No.	Housing No.	Mass (kg)
	d		L	P	A ₂	A ₁	A	j	K	N	J	f	S	E	A ₄					
	(in.)	(mm)																		
UCFC201S 201-8S 202S 202-10S 203S 203-11S	1/2	12	90	70	10	19	23	4	5	10	49.5	55	11.5	25.9	--	M8	UC201S 201-8S 202S 202-10S 203S 203-11S	FC203	0.53	
	5/8	15																	0.52	
	17	17																	0.51	
	11/16																			
UCFC201 201-8 202 202-10 203 203-11 204-12 204	1/2	12	100	78	10	20.5	25.5	5	6	12	55.1	62	12.7	28.3	32.5	M10	UC201 201-8 202 202-10 203 203-11 204-12 204	FC204	0.72	
	5/8	15																	0.70	
	17	17																	0.69	
	11/16	20																	0.67	
204-12	3/4																			
204	20																			
UCFC205-14 205-15 205 205-16	7/8	12	115	90	10	21	27	6	7	12	63.6	70	14.3	29.7	34	M10	UC205-14 205-15 205 205-16	FC205	0.98	
	15/16	15																		
	1	17																		
	1	20																		
UCFC206-18 206 206-19 206-20	1-1/8	30	125	100	10	23	31	8	8	12	70.7	80	15.9	32.2	36	M10	UC206-18 206 206-19 206-20	FC206	1.33	
	1-3/16	35																		
	1-3/16	35																		
	1-1/4	35																		
UCFC207-20 207-21 207-22 207 207-23	1-1/4	35	135	110	11	26	34	8	9	14	77.8	90	17.5	36.4	40.5	M12	UC207-20 207-21 207-22 207 207-23	FC207	1.64	
	1-5/16	40																		
	1-3/8	40																		
	1-7/16	40																		
UCFC208-24 208-25 208	1-1/2	40	145	120	11	26	36	10	9	14	84.8	100	19	41.2	45	M12	UC208-24 208-25 208	FC208	2.04	
	1-9/16	45																		
	40	45																		
	40	45																		
UCFC209-26 209-27 209-28 209	1-5/8	45	160	132	10	26	38	12	10	16	93.3	105	19	40.2	45	M14	UC209-26 209-27 209-28 209	FC209	2.40	
	1-11/16	50																		
	1-3/4	50																		
	1-3/4	50																		
UCFC210-30 210-31 210	1-7/8	50	165	138	10	28	40	12	14	16	97.6	110	19	42.6	48	M14	UC210-30 210-31 210	FC210	2.83	
	1-15/16	55																		
	50	55																		
	50	55																		
UCFC211-32 211-34 211 211-35	2	55	185	150	13	30	42	12	13	19	106.1	125	22.2	46.4	52	M16	UC211-32 211-34 211 211-35	FC211	3.82	
	2-1/8	60																		
	2-3/16	60																		
	2-3/16	60																		
UCFC212-36 212 212-38 212-39	2-1/4	60	195	160	17	36	48	12	15	19	113.1	135	25.4	56.7	62.5	M16	UC212-36 212 212-38 212-39	FC212	4.84	
	2-3/8	65																		
	2-7/16	65																		
	2-7/16	65																		
UCFC213-40 213	2-1/2	65	205	170	16	35	49	14	15	19	120.2	145	25.4	55.7	65	M16	UC213-40 213	FC213	5.43	
	2-1/2	70																		
	2-1/2	70																		
	2-1/2	70																		
UCFC214-44 214	2-3/4	70	215	177	17	38	52	14	16	19	125.1	150	30.2	61.4	--	M16	UC214-44 214	FC214	6.28	
	2-3/4	75																		
	2-3/4	75																		
	2-3/4	75																		
UCFC215 215-48	3	75	220	184	18	39	55	16	17	19	130.1	160	33.3	62.5	--	M16	UC215 215-48	FC215	7.18	
	3	80																		
	3	80																		
	3	80																		
UCFC216 216-52	3-1/4	80	240	200	18	42	58	16	18	23	141.4	170	33.3	67.3	--	M20	UC216 216-52	FC216	9.17	
	3-1/4	85																		
	3-1/4	85																		
	3-1/4	85																		
UCFC217-52 217	3-1/4	85	250	208	18	45	63	18	20	23	147.1	180	34.1	69.6	--	M20	UC217-52 217	FC217	10.6	
	3-1/4	90																		
	3-1/4	90																		
	3-1/4	90																		
UCFC218-56 218	3-1/2	90	265	220	22	50	68	18	20	23	155.5	190	39.7	78.3	--	M20	UC218-56 218	FC218	12.6	
	3-1/2	90																		
	3-1/2	90																		
	3-1/2	90																		



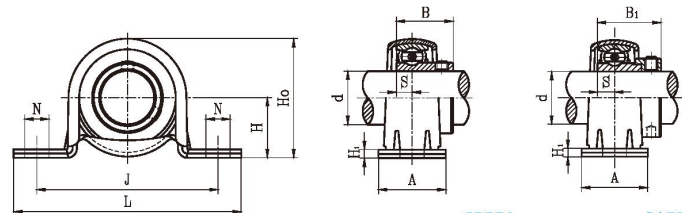
UCFC2 Setscrew



NAFC2 Setscrew



UKFC2 Setscrew



SBPP2 Setscrew type SAPP2 Eccentric locking collar type

Unit No.	Shaft Dia.		Dimensions(mm).										Bolt Size	Bearing No.	Housing No.	Mass (kg)	
	d		H	J	L	A	N	H ₁	H ₀	S	B						
	(in.)	(mm)															
SBPP201	201-8 202 202-10 203 203-11	12	22.2	68	86	25	9.5	3	43.5	6	22	M8	SB201	PP203		0.17	
201-8		15											201-8			0.16	
202		17											202-10			0.15	
202-10													203				
203													203-11				
SBPP204-12	3/4	20	25.4	76	98	32	9.5	3	50.2	7	25	M8	SB204-12	PP204		0.21	
204	7/8	25	28.6	86	108	32	11.5	4	56.4	7.5	27	M10	SB205-14	PP205		0.30	
204	15/16												205-15				
205													205				
205-16	1												205-16				
SBPP206-18	1-1/8	30	33.3	95	117	38	11.5	4	66.1	8	30	M10	SB206-18	PP206		0.42	
206													206				
206-19	1-3/16												206-19				
206-20	1-1/4												206-20				
SBPP207-20	1-1/4	35	39.7	106	129	42	11.5	4	77.7	8.5	32	M10	SB207-20	PP207		0.59	
207-21	1-5/16												207-21				
207-22	1-3/8												207-22				
207													207				
207-23	1-7/16												207-23				

Unit No.	Shaft Dia.		Dimensions(mm).										Bolt Size	Bearing No.	Housing No.	Mass (kg)
	d		H	J	L	A	N	H ₁	H ₀	S	B ₁					
	(in.)	(mm)														
SAPP201	12												SA201		0.19	
201-8	1/2	15											201-8		0.18	
202		17											202	PP203	0.16	
202-10	5/8		22.2	68	86	25	9.5	3	43.5	6.5	28.6	M8	202-10			
203													203			
203-11	11/16												203-11			
SAPP204-12	3/4	20	25.4	76	98	32	9.5	3	50.2	7.5	30.9	M8	SA204-12	PP204	0.24	
204													204			
SAPP205-14	7/8	25	28.6	86	108	32	11.5	4	56.4	7.5	30.9	M10	SA205-14	PP205	0.32	
205-15	15/16												205-15			
205													205			
205-16	1												205-16			
SAPP206-18	1-1/8	30											SA206-18	PP206	0.47	
206													206			
206-19	1-3/16		33.3	95	117	38	11.5	4	66.1	9	35.7	M10	206-19			
206-20	1-1/4												206-20			
SAPP207-20	1-1/4	35	39.7	106	129	42	11.5	4	77.7	9.5	38.9	M10	SA207-20	PP207	0.65	
207-21	1-5/16												207-21			
207-22	1-3/8												207-22			
207													207			
207-23	1-7/16												207-23			



SAPP2, SBPP2



SBPFL2, SAPFL2



SBPF2, SAPF2



SBPFT2, SAPFT2



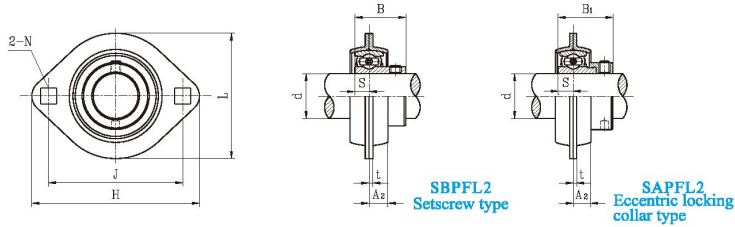
Pressed Housing



Disk Bearings



Disk Bearings



Unit No.	Shaft Dia.		Dimensions(mm).								Bolt Size		Bearing No.	Housing No.	Mass (kg)
	d (in.)	d (mm)	H	J	A2	L	N	t	S	B					
SBPFL201-8 202 202-10 203 203-11	1/2 5/8 11/16	12 15 17	81	63.5	7	59	7.5	2	6	22	M6	1/4	SB201-8 201-8 202 202-10 203 203-11	PFL203	0.18 0.17 0.16
SBPFL204-12 204	3/4	20	90	71.5	8	67	9	2	7	25	M8	5/16	SB204-12 204	PFL204	0.22
SBPFL205-14 205-15 205 205-16	7/8 15/16 1	25	95	76	9	71	9	2	7.5	27	M8	5/16	SB205-14 205-15 205 205-16	PFL205	0.27
SBPFL206-18 206 206-19 206-20	1-1/8 1-3/16 1-1/4	30	113	90.5	9	84	10.5	2.5	8	30	M10	3/8	SB206-18 206 206-19 206-20	PFL206	0.41
SBPFL207-20 207-21 207-22 207 207-23	1-1/4 1-5/16 1-3/8 1-7/16	35	122	100	10	94	10.5	2.5	8.5	32	M10	3/8	SB207-20 207-21 207-22 207 207-23	PFL207	0.58
SBPFL208-24 208-25 208	1-1/2 1-9/16	40	148	119	12	100	13.5	3.5	9	34	M12	1/2	SB208-24 208-25 208	PFL208	0.81

Unit No.	Shaft Dia.		Dimensions(mm).								Bolt Size		Bearing No.	Housing No.	Mass (kg)
	d (in.)	d (mm)	H	J	A2	L	N	t	S	B					
SAPFL201-8 202 202-10 203 203-11	1/2 5/8 11/16	12 15 17	81	63.5	7	59	7.5	2	6.5	28.6	M6	1/4	SA201-8 201-8 202 202-10 203 203-11	PFL203	0.20 0.19 0.17
SAPFL204-12 204	3/4	20	90	71.5	8	67	9	2	7.5	30.9	M8	5/16	SA204-12 204	PFL204	0.25
SAPFL205-14 205-15 205 205-16	7/8 15/16 1	25	95	76	9	71	9	2	7.5	30.9	M8	5/16	SA205-14 205-15 205 205-16	PFL205	0.29
SAPFL206-18 206 206-19 206-20	1-1/8 1-3/16 1-1/4	30	113	90.5	9	84	10.5	2.5	9	35.7	M10	3/8	SA206-18 206 206-19 206-20	PFL206	0.46
SAPFL207-20 207-21 207-22 207 207-23	1-1/4 1-5/16 1-3/8 1-7/16	35	122	100	10	94	10.5	2.5	9.5	38.9	M10	3/8	SA207-20 207-21 207-22 207 207-23	PFL207	0.64
SAPFL208-24 208-25 208	1-1/2 1-9/16	40	148	119	12	100	13.5	3.5	11	43.7	M12	1/2	SA208-24 208-25 208	PFL208	0.94



SAPP2, SBPP2



SBPFL2, SAPFL2



SBPF2, SAPF2



SBPFT2, SAPFT2



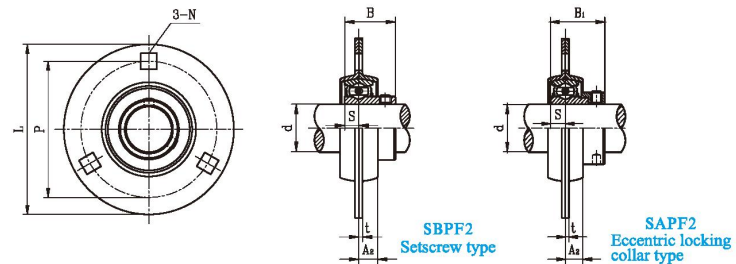
Pressed Housing



Disk Bearings



Disk Bearings



Unit No.	Shaft Dia.		Dimensions(mm).							Bolt Size		Bearing No.	Housing No.	Mass (kg)
	d (in.)	d (mm)	L	P	A ₂	t	N ⁰	S	B					
SBPF201 201-8	1/2	12										SB201 201-8		0.24
202												202		
202-10	5/8	15	82	64	7	2	7.5	6	22	1/4	M6	202-10	PF203	0.23
203												203		
203-11	11/16	17										203-11		0.22
SBPF204-12 204	3/4	20	91	71	8	2	9	7	25	5/16	M8	SB204-12 204	PF204	0.29
SBPF205-14 205-15	7/8	25	95	76	9	2	9	7.5	27	5/16	M8	SB205-14 205-15	PF205	0.35
205-16	1											205-16		
SBPF206-18 206	1-1/8	30	113	90	9	2.5	10.5	8	30	3/8	M10	SB206-18 206	PF206	0.55
206-19	1-3/16											206-19		
206-20	1-1/4											206-20		
SBPF207-20 207-21	1-1/4	35	122	100	10	2.5	10.5	8.5	32	3/8	M10	SB207-20 207-21	PF207	0.73
207-22	1-5/16											207-22		
207	1-3/8											207		
207-23	1-7/16											207-23		
SBPF208-24 208-25	1-1/2	40	148	119	12	3.5	13.5	9	34	1/2	M12	SB208-24 208-25	PF208	1.18
208	1-9/16											208		

Unit No.	Shaft Dia.		Dimensions(mm).							Bolt Size		Bearing No.	Housing No.	Mass (kg)
	d (in.)	d (mm)	L	P	A ₂	t	N ⁰	S	B ₁					
SAPF201 201-8	1/2	12										SA201 201-8		0.26
202												202		
202-10	5/8	15	82	64	7	2	7.5	6.5	28.6	1/4	M6	202-10	PF203	0.25
203												203		
203-11	11/16	17										203-11		0.23
SAPF204-12 204	3/4	20	91	71	8	2	9	7.5	30.9	5/16	M8	SA204-12 204	PF204	0.32
SAPF205-14 205-15	7/8	25	95	76	9	2	9	7.5	30.9	5/16	M8	SA205-14 205-15	PF205	0.37
205-16	1											205-16		
SAPF206-18 206	1-1/8	30	113	90	9	2.5	10.5	9	35.7	3/8	M10	SA206-18 206	PF206	0.60
206-19	1-3/16											206-19		
206-20	1-1/4											206-20		
SAPF207-20 207-21	1-1/4	35	122	100	10	2.5	10.5	9.5	38.9	3/8	M10	SA207-20 207-21	PF207	0.79
207-22	1-5/16											207-22		
207	1-3/8											207		
207-23	1-7/16											207-23		
SAPF208-24 208-25	1-1/2	40	148	119	12	3.5	13.5	11	43.7	1/2	M12	SA208-24 208-25	PF208	1.31
208	1-9/16											208		

Remarks:⊙ SBPF208 and SAPF208 have four bolt holes.



SAPP2, SBPP2



SBPFL2, SAPFL2



SBPF2, SAPF2



SBPFT2, SAPFT2



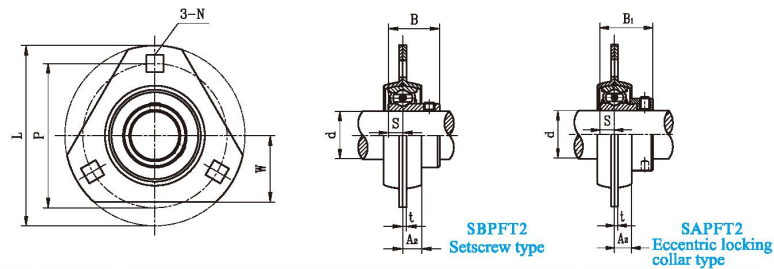
Pressed Housing



Disk Bearings



Disk Bearings



Unit No.	Shaft Dia.		Dimensions(mm).								Bolt Size		Bearing No.	Housing No.	Mass (kg)
	d (in.)	d (mm)	L	P	A ₂	t	N	W	S	B					
SBPFT201 201-8 202 202-10 203 203-11	1/2 5/8 1 1/16	12 15 17	82	64	7	2	7.5	29	6	22	1/4	M6	SB201 201-8 202 202-10 203 203-11	PFT203	0.20 0.19 0.18
SBPFT204-12 204	3/4	20	91	71	8	2	9	33	7	25	5/16	M8	SB204-12 204	PFT204	0.24
SBPFT205-14 205-15 205 205-16	7/8 1 5/16 1	25	95	76	9	2	9	35	7.5	27	5/16	M8	SB205-14 205-15 205 205-16	PFT205	0.32
SBPFT206-18 206 206-19 206-20	1-1/8 1-3/16 1-1/4	30	113	90	9	2.5	10.5	38	8	30	3/8	M10	SB206-18 206 206-19 206-20	PFT206	0.43
SBPFT207-20 207-21 207-22 207 207-23	1-1/4 1-5/16 1-3/8 1-7/16	35	122	100	10	2.5	10.5	45	8.5	32	3/8	M10	SB207-20 207-21 207-22 207 207-23	PFT207	0.62

Unit No.	Shaft Dia.		Dimensions(mm).								Bolt Size		Bearing No.	Housing No.	Mass (kg)
	d (in.)	d (mm)	L	P	A ₂	t	N	W	S	B ₁					
SAPFT201 201-8 202 202-10 203 203-11	1/2 5/8 1 1/16	12 15 17	82	64	7	2	7.5	29	6.5	28.6	1/4	M6	SA201 201-8 202 202-10 203 203-11	PFT203	0.22 0.21 0.19
SAPFT204-12 204	3/4	20	91	71	8	2	9	33	7.5	30.9	5/16	M8	SA204-12 204	PFT204	0.27
SAPFT205-14 205-15 205 205-16	7/8 1 5/16 1	25	95	76	9	2	9	35	7.5	30.9	5/16	M8	SA205-14 205-15 205 205-16	PFT205	0.34
SAPFT206-18 206 206-19 206-20	1-1/8 1-3/16 1-1/4	30	113	90	9	2.5	10.5	38	9	35.7	3/8	M10	SA206-18 206 206-19 206-20	PFT206	0.48
SAPFT207-20 207-21 207-22 207 207-23	1-1/4 1-5/16 1-3/8 1-7/16	35	122	100	10	2.5	10.5	45	9.5	38.9	3/8	M10	SA207-20 207-21 207-22 207 207-23	PFT207	0.68



SAPP2, SBPP2



SBPFL2, SAPFL2



SBPF2, SAPF2



SBPFT2, SAPFT2



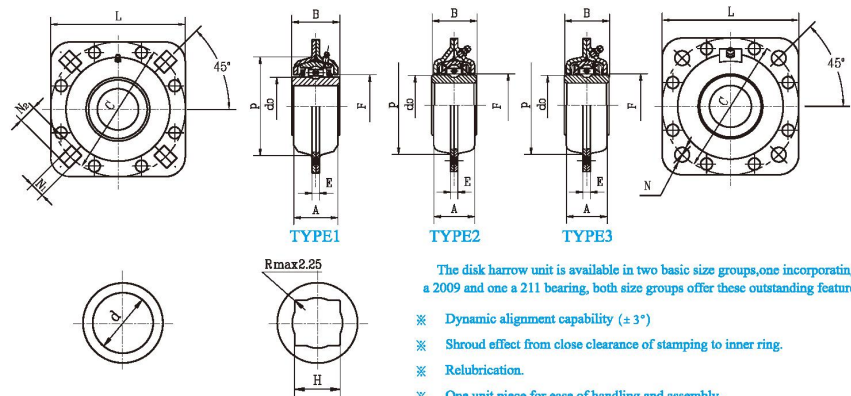
Pressed Housing



Disk Bearings



Disk Bearings



ROUND BORE(RD)

SQUARE BORE(SQ)

The disk harrow unit is available in two basic size groups, one incorporating a 209 and one a 211 bearing, both size groups offer these outstanding features

- ※ Dynamic alignment capability ($\pm 3^\circ$)
- ※ Shroud effect from close clearance of stamping to inner ring.
- ※ Relubrication.
- ※ One unit piece for ease of handling and assembly.
- ※ Fitting flange mates with outer ring milled recess, preventing possibility of outer ring circumferential movement.

209 Series

Unit No.	TYPE	Bearing Bore Size (mm)		Dimensions(mm.)									Basic Dynamic Load Rating (N)	Basic Static Load Rating (N)	
		H (SQ)	d (RD)	L	P	B	A	F	do	E	C	N (N1XN2)			
ST491A	1	--	45	127	98	42.8	60	57.547	7	127	Φ 13.5	31850	17500		
ST491A-I	2	--													
ST491A- II	3	--													
DHU45R-209	1	--	38.86											42	
ST491B	1	--													
ST491B-I	2	--													
ST491B- II	3	--													
ST209-1 1/8	1	--	29.972												42
ST209-1 1/8- I	2	--													
ST209-1 1/8- II	3	--													

211 Series

Unit No.	TYPE	Bearing Bore Size (mm)		Dimensions(mm.)									Basic Dynamic Load Rating (N).	Basic Static Load Rating (N).	
		H (SQ)	d (RD)	L	P	B	A	F	do	E	C	N(N1XN2)			
DHU55R-211	1	--	55	139.7	113.5	55.5	46.4	73	69	9	139.7	13.5×15.1	43550	25000	
DHU55R-211-I	2	--					42	71		8					
ST211-1 3/4	1	--	45.212				46.4	73		9					
ST211-2 3/16	1	--	55.575			42	71	9		8					Φ 13.5
ST211-2 3/16-I	2	--													
DHU40S-211	1	40.878									--	46.4			
FD211-1 1/2	2	38.89	--			42	71	8							



SAPP2, SBPP2



SBPFL2, SAPFL2



SBPF2, SAPF2



SBPFT2, SAPFT2



Pressed Housing

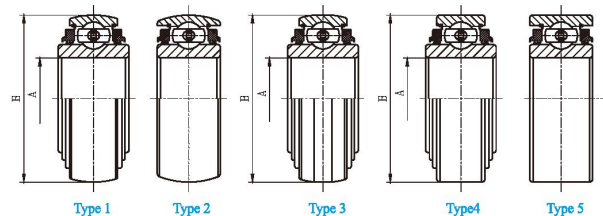


Disk Bearings



Disk Bearings

Tri-Ply Seal Series Non-Relubricatable type



ROUND BORE

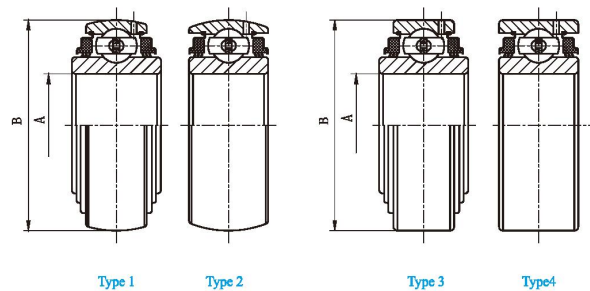
Unit No.	Type	Bearing Bore Size		Outside Dia.		Ring Width			
		A		B		Inner Ring		Outer Ring	
		(in.)	(mm)	(in.)	(mm)	(in.)	(mm)	(in.)	(mm)
205PPB7	1	0.9375	23.813	2.0472	52	1.3748	34.92	0.591	15
W208PPB7	1	1.1880	30.175	3.1496	80	1.189	30.2	0.709	18
W208PP10	4	1.5005	38.113	3.1496	80	1.691	42.96	0.827	21
W208PPB23	1	1.5005	38.113	3.1496	80	1.691	42.96	1.189	30.2
W209PPB2	2	1.7717	45	3.3460	85	1.189	30.2	1.189	30.2
W209PPB4	2	1.5350	39	3.3460	85	1.189	30.2	1.189	30.2
W210PP2	5	1.9380	49.225	3.5433	90	1.189	30.2	1.189	30.2
W210PPB2	2	1.9380	49.225	3.5433	90	1.189	30.2	1.189	30.2
W211PP2	5	2.1880	55.575	3.9370	100	1.313	33.34	1.313	33.34
W211PPB2	2	2.1880	55.575	3.9370	100	1.313	33.34	1.313	33.34

SQUARE BORE

Bearing No.	Type	Square Shaft Size	Square Bore Size	Outside Dia.		Ring Width			
		(in.)	(mm)	B		Inner Ring		Outer Ring	
		(in.)	(mm)	(in.)	(mm)	(in.)	(mm)	(in.)	(mm)
W208PPB13	1	7/8	23.117	3.1496	80	1.437	36.5	0.709	18
W208PPB6	1	1	26.162	3.1496	80	1.437	36.5	0.709	18
W208PP5	4	1-1/8	29.972	3.1496	80	1.437	36.5	0.709	18
W208PPB5	1	1-1/8	29.972	3.1496	80	1.437	36.5	0.709	18
W208PP8	4	1-1/8	29.972	3.1496	80	1.437	36.5	1.189	30.2
W208PPB8	1	1-1/8	29.972	3.1496	80	1.437	36.5	1.189	30.2
W208PPB11	3	7/8	23.117	3.3760	85.75	1.437	36.5	1.189	30.2
W208PPB12	3	1-1/8	29.972	3.3760	85.75	1.437	36.5	1.189	30.2
W209PPB5	1	1-1/4	32.766	3.3460	85	1.437	36.5	1.189	30.2
W210PP4	5	1-1/8	29.972	3.5433	90	1.189	30.2	1.189	30.2
W210PPB4	2	1-1/8	29.972	3.5433	90	1.189	30.2	1.189	30.2
W211PP3	5	1-1/2	38.89	3.9370	100	1.313	33.34	1.313	33.34
W211PPB3	2	1-1/2	38.89	3.9370	100	1.313	33.34	1.313	33.34
W211PP5	4	1-1/2	38.89	4.0000	101.6	1.750	44.45	1.438	36.52
W211PPB6	3	1-1/2	38.89	4.0772	103.56	1.750	44.45	1.438	36.52



Tri-Ply Seal Series Relubricatable type



ROUND BORE

Unit No.	Type	Bearing Bore Size		Outside Dia.		Ring Width			
		A		B		Inner Ring		Outer Ring	
		(in.)	(mm)	(in.)	(mm)	(in.)	(mm)	(in.)	(mm)
205PPB7G	1	0.9375	23.813	2.0472	52	1.375	34.92	0.591	15
GW209PPB4	2	1.5350	39	3.3465	85	1.189	30.2	1.189	30.2
GW209PPB2	2	1.7717	45	3.3465	85	1.189	30.2	1.189	30.2
GW209PPB11	1	1.7810	45.24	3.3465	85	1.437	36.5	0.866	22
GW210PPB2	2	1.9380	49.225	3.5433	90	1.189	30.2	1.189	30.2
GW211PPB2	2	2.1880	55.575	3.9370	100	1.313	33.34	1.313	33.34

SQUARE BORE

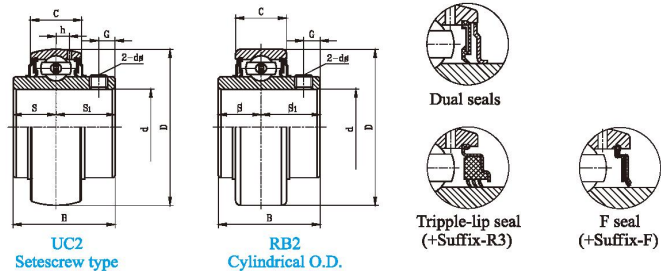
Unit No.	Type	Square Shaft Size	Square Bore Size	Outside Dia.		Ring Width			
				B		Inner Ring		Outer Ring	
		(in.)	(mm)	(in.)	(mm)	(in.)	(mm)	(in.)	(mm)
GW208PPB5	1	1-1/8	29.972	3.1496	80	1.437	36.5	0.827	21
GW208PPB8	1	1-1/8	29.972	3.1496	80	1.437	36.5	1.189	30.2
GW208PPB17	1	1-1/8	29.972	3.3755	85.738	1.437	36.5	1.189	30.2
GW209PPB5	1	1-1/4	32.766	3.3465	85	1.437	36.5	1.189	30.2
GW209PPB8	1	1-1/4	32.766	3.3465	85	1.437	36.5	0.866	22
GW210PP4	4	1-1/8	29.972	3.5433	90	1.189	30.2	1.189	30.2
GW210PPB4	2	1-1/8	29.972	3.5433	90	1.189	30.2	1.189	30.2
GW211PP3	4	1-1/2	38.89	3.9370	100	1.313	33.34	1.313	33.34
GW211PPB3	2	1-1/2	38.89	3.9370	100	1.313	33.34	1.313	33.34
GW211PP17	3	1-1/2	38.89	3.9370	100	1.750	44.45	1.313	33.34



Bearing NO.	Type	Dimensions(mm/in.)					Dynamic load ratings(N)	Static load ratings(N)	Weight(kg)
		d1	H	D	C	B			
204 KPP2	3	0.797	0.695	1.8504	0.551	0.825	12800	6650	0.34
204 KPP2	3	20.24	17.653	47	14	20.96	12800	6650	0.34
204 KRR2	1	0.797	0.695	1.8504	0.551	0.825	12800	6650	0.32
204 KRR2	1	20.24	17.653	47	14	20.96	12800	6650	0.32
204 KRRB2	2	0.797	0.695	1.8504	0.551	0.825	12800	6650	0.32
204 KRRB2	2	20.24	17.653	47	14	20.96	12800	6650	0.32
204 KPPB2	4	0.797	0.695	1.8504	0.551	0.825	12800	6650	0.32
204 KPPB2	4	20.24	17.653	47	14	20.96	12800	6650	0.32
205 KPP2	3	1.012	0.876	2.047	0.591	1	14000	7850	0.47
205 KPP2	3	25.7	22.25	52	15	25.4	14000	7850	0.47
205 KRR2	1	1.012	0.876	2.047	0.591	1	14000	7850	0.44
205 KRR2	1	25.7	22.25	52	15	25.4	14000	7850	0.44
205 KPPB2	4	1.012	0.876	2.047	0.591	1	14000	7850	0.47
205 KPPB2	4	25.7	22.25	52	15	25.4	14000	7850	0.47
205 KRRB2	2	1.012	0.876	2.047	0.591	1	14000	7850	0.44
205 KRRB2	2	25.7	22.25	52	15	25.4	14000	7850	0.44
206 KRR6	1	1.152	1.001	2.4409	0.63	0.945	19450	11250	0.75
206 KRR6	1	29.26	25.425	62	16	24	19450	11250	0.75
206 KRRB6	2	1.152	1.001	2.4409	0.63	0.945	19450	11250	0.75
206 KRRB6	2	29.26	25.425	62	16	24	19450	11250	0.75
G207 KPPB2	4	1.298	1.26	2.8346	0.748	1.484	25700	15200	1.1
G207 KPPB2	4	32.97	28.6	72	19	37.7	25700	15200	1.1
207 KRRB9	2	1.298	1.26	2.8346	0.669	1.484	25700	15200	1
207 KRRB9	2	32.97	28.6	72	17	37.7	25700	15200	1
207 KRRB12	2	1.298	1.26	2.8346	0.669	0.984	25700	15200	0.87
207 KRRB12	2	32.97	28.6	72	17	25	25700	15200	0.87
207 KPPB3	4	1.4429	1.2512	2.8346	0.669	1.484	25700	15200	0.87
207 KPPB3	4	36.65	31.78	72	17	37.7	25700	15200	0.87
207 KPP3	3	1.4429	1.2512	2.8346	0.669	0.984	25700	15200	0.87
207 KPP3	3	36.65	31.78	72	17	25	25700	15200	0.87

HEX BORE BEARING





Unit No.	Shaft Dia.		Dimensions(mm)/(in.)								Basic load rating (N)		Mass(kg)	
	d (in.)	d (mm)	D	B	C	S	S1	G	h	ds	Dynamic Gr	Static Cer	UC	RB
UC201S RB201-BS 202S 202-10S 203S 203-11S	1/2 5/8 11/16	12 15 17	40 1.5748	27.4 1.0787	14 0.5512	11.5 0.4528	15.9 0.6260	4.2 0.1654	3.5 0.1378	M5X0.8 10 #32UNF	9550	4780	0.12 0.12 0.11 0.10 0.10	—
UC201 RB201-8 202 202-10 203 203-11 204-12 204	1/2 5/8 11/16 3/4	12 15 17 20	47 1.8504	31 1.2205	16 0.6299	12.7 0.5000	18.3 0.7205	4.7 0.1850	4.4 0.1732	M6X1 1/4-28UNF	12800	6650	0.21 0.20 0.19 0.19 0.18 0.18 0.17 0.16	0.22 0.21 0.20 0.20 0.19 0.19 0.18 0.17
UC205-14 RB205-15 205	7/8 15/16 1	25	52 2.0472	34 1.3386	17 0.6693	14.3 0.5630	19.7 0.7756	5.5 0.2165	4.3 0.1693	M6X1 1/4-28UNF	14000	7880	0.23 0.21 0.20 0.19	0.24 0.22 0.21 0.20
UC208-18 RB208 208-19 208-20	1-1/8 1-3/16 1-1/4	30	62 2.4409	38.1 1.5000	19 0.7480	15.9 0.6260	22.2 0.8740	5.5 0.2165	5 0.1969	M6X1 1/4-28UNF	19500	11200	0.33 0.31 0.31 0.29	0.34 0.32 0.32 0.30
UC207-20 RB207-21 207-22 207 207-23	1-1/4 1-5/16 1-3/8 1-7/16	35	72 2.8346	42.9 1.6890	20 0.7874	17.5 0.6890	25.4 1.0000	6.5 0.2559	5.8 0.2283	M8X1 5/16-24UNF	25700	15200	0.53 0.50 0.48 0.48 0.45	0.55 0.52 0.50 0.50 0.47
UC208-24 RB208-25 208	1-1/2 1-9/16 1-1/2	40	80 3.1496	49.2 1.9370	21 0.8268	19 0.7480	30.2 1.1890	8 0.3150	6.3 0.2480	M8X1 5/16-24UNF	29600	18200	0.68 0.65 0.63	0.70 0.67 0.65
UC209-26 RB209-27 209-28 209	1-5/8 1-11/16 1-3/4	45	85 3.3465	49.2 1.9370	22 0.8661	19 0.7480	30.2 1.1890	8 0.3150	6.8 0.2677	M8X1 5/16-24UNF	31850	20800	0.77 0.74 0.74 0.69	0.79 0.76 0.76 0.71
UC210-30 RB210-31 210 210-32	1-7/8 1-15/16 2	50	90 3.5433	51.6 2.0315	23 0.9055	19 0.7480	32.6 1.2835	9 0.3543	6.5 0.2559	M10X1.25 3/8-24UNF	35100	23200	0.82 0.79 0.78 0.72	0.85 0.82 0.82 0.75
UC211-32 RB211-34 211 211-35	2 2-1/8 2-3/16	55	100 3.9370	55.6 2.1890	25 0.9843	22.2 0.8740	33.4 1.3150	9 0.3543	7.2 0.2835	M10X1.25 3/8-24UNF	43550	29200	1.19 1.08 1.04 1.02	1.22 1.11 1.07 1.05
UC212-36 RB212 212-38 212-39	2-1/4 2-3/8 2-7/16	60	110 4.3307	65.1 2.5630	27 1.0630	25.4 1.0000	39.7 1.5630	10.5 0.4134	8.2 0.3228	M10X1.25 3/8-24UNF	47800	32800	1.54 1.41 1.39 1.32	1.58 1.45 1.43 1.36
UC213-40 213	2-1/2	65	120 4.7244	65.1 2.5630	28 1.1024	25.4 1.0000	39.7 1.5630	12 0.4724	8 0.3150	M12X1.25 3/8-24UNF	57200	40000	1.84 1.76	—
UC214-44 214	2-3/4	70	125 4.9213	74.6 2.9370	30 1.1811	30.2 1.1890	44.4 1.7480	13 0.5112	9 0.3543	M12X1.25 7/16-20UNF	60800	45000	2.01 2.00	—
UC215-47 215 215-48	2-5/16 3	75	130 5.1181	77.8 3.0630	30 1.1811	33.3 1.3110	44.5 1.7520	12 0.4724	9 0.3543	M12X1.25 7/16-20UNF	66000	49500	2.22 2.20 2.11	—
UC216		80	140 5.5118	82.6 3.2520	33 1.3110	33.3 1.3110	49.3 1.9410	14 0.5512	10.3 0.4055	M12X1.25 7/16-20UNF	71500	54200	2.73	—
UC217-52 217	3-1/4	85	150 5.9055	85.7 3.3740	35 1.3780	34.1 1.3425	51.6 2.0315	14 0.5512	11 0.4331	M12X1.25 7/16-20UNF	83200	63800	3.58 3.52	—
UC218-58 218	3-1/2	90	160 6.2992	96 3.7795	37 1.4567	39.7 1.5630	56.3 2.2165	14 0.5512	12 0.4724	M12X1.25 1/2-20UNF	95900	71500	4.23 4.11	—
UC220 220-84		100	180 7.0866	108 4.2520	40 1.5748	42 1.6535	66 2.5984	16 0.6299	12.1 0.4764	M16X1.5 5/8-18UNF	122000	92800	6.11 5.90	—



UC2 Setscrew type



UC2T Centric Locki



UCX Setscrew



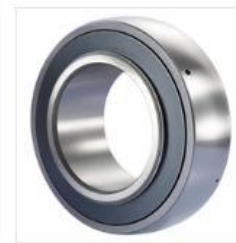
UC3 Setscrew



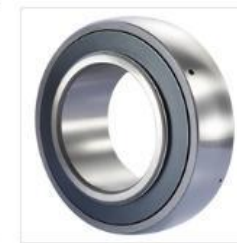
NA2, HC2 Eccentric



NA3 Eccentric lock



UK2 Tapered bore



UK3 Tapered bore



ER2 Setscrew type



ER2T Centric locki



SER2 Setscrew type



SA2, SA2G, CSA2

OTHER TYPES:

